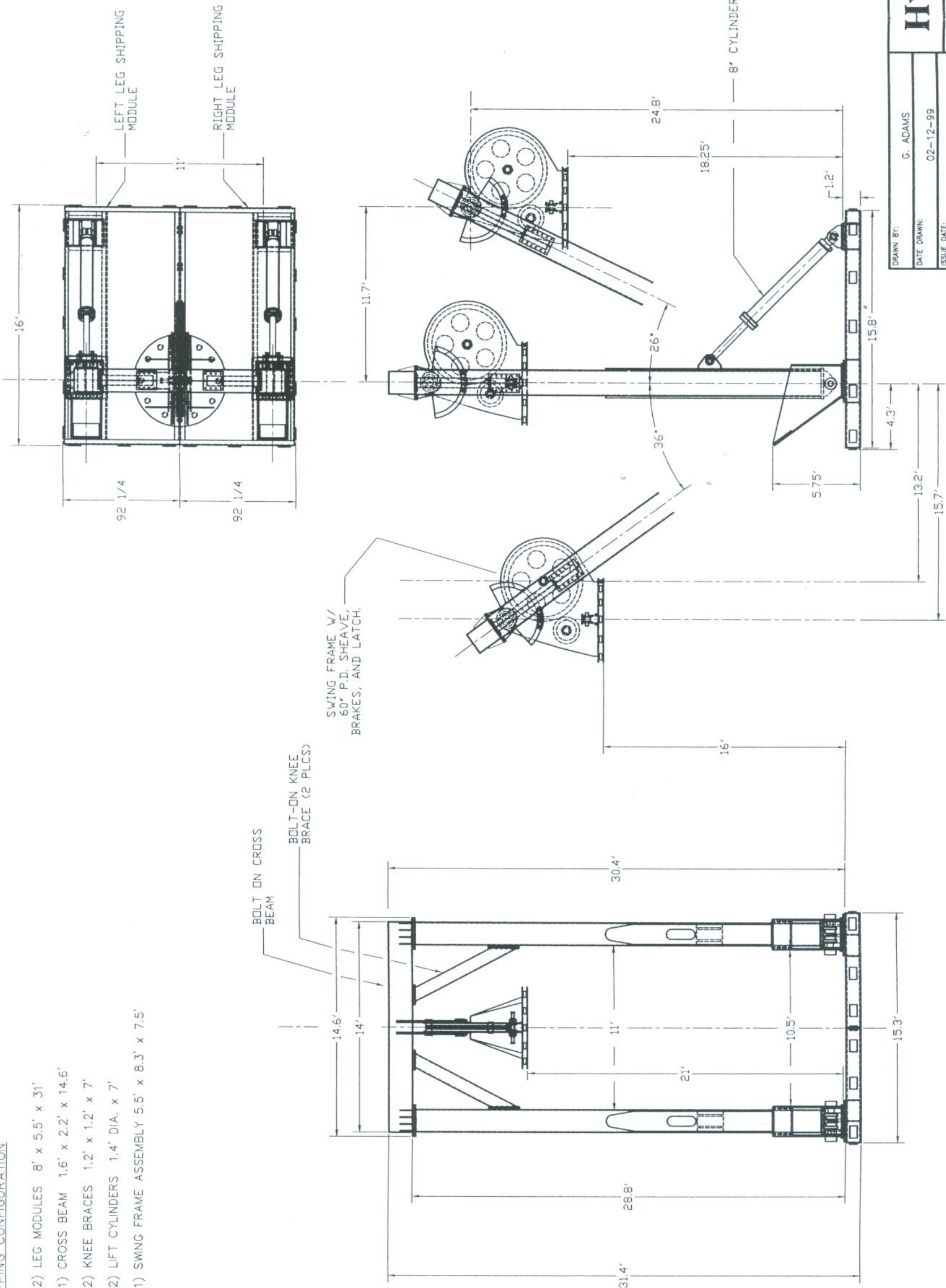


SHIPPING CONFIGURATION

1. (2) LEG MODULES 8' x 5.5' x 31'
2. (1) CROSS BEAM 1.6' x 2.2' x 14.6'
3. (2) KNEE BRACES 1.2' x 1.2' x 7'
4. (2) LIFT CYLINDERS 1.4' DIA. x 7'
5. (1) SWING FRAME ASSEMBLY 5.5' x 8.3' x 7.5'



OPERATIONAL DATA

RATED CAPACITY: 10 mT to Seastate 6-7
 MAXIMUM REACH: 15.5 ft.
 STOWED REACH: (-) 13.5'

SHIPPING WEIGHT: 15,800 Lbs

HYDRA♦PRO 4259 22nd AVE. V. SEATTLE, WA, USA 98199 (206) 285-9578 Fax: (206) 285-9579	
TITLE GENERAL ARRANGEMENT AND DATA FOR 10mT A-FRAME & SWING FRAME	
DRAWN BY: G. ADAMS	DATE DRAWN: 02-12-99
ISSUE DATE: 02-12-99	CHECKED BY: G. ADAMS
DATE CHECKED: 02-12-99	APPROVED BY:
DATE APPROVED:	CONTRACT NUMBER:
SIZE B 083N8	DRAWING NUMBER SP-250
SCALE NONE	WEIGHT LISTED
SHEET NUMBER 1 OF 1	REV. 0

B

C

D

A